

INAUGURAL
ISSUE

THE ARCH

november 2014 / volume 1 / number 1



30 N. Michigan Avenue
Suite 2020
Chicago, IL 60602-3402
(312) 922-1742
www.Landmarks.org



EXECUTIVE COMMITTEE

- | | |
|-------------------------|------------------------|
| Alicia Mazur Berg | <i>Chairman</i> |
| William W. Tippens | <i>Vice Chairman</i> |
| Bonnie McDonald | <i>President</i> |
| Lisa Fiorenza | <i>Treasurer</i> |
| Rhonda C. Thomas | <i>Secretary</i> |
| Mark G. Henning | <i>General Counsel</i> |
| Susan Baldwin Burian | |
| Jean A. Follett, Ph.D. | |
| Shelley Gorson | |
| Graham Grady | |
| Philip Hamp | |
| Paul B. O'Kelly | |
| Colleen Reitan | |
| Anne-Marie St. Germaine | |
| Jack Tribbia | |
| Anne B. Voshel | |

BOARD OF DIRECTORS

- Andy Ahitow
Joseph M. Antunovich
Inga Carus
Dale Chapman
Edward Gerns
Ari Glass
Krista Gnatt
Jacob Goldberg
Jeffrey P. Goulette
Sean P. McGowan
David Moes
Jorge A. Moreno
Karen A. Prieur
Michael Rachlis
Sandra Rand
Charles T. Rivkin
Janet Rotner
Robin Schabes
Martin Sinclair, Jr.
Martin C. Tangora *
John J. Tully
*Life Member

CHAIRMAN EMERITUS

- Richard A. Miller

STAFF

- | | |
|-------------------|---|
| Bonnie McDonald | <i>President</i> |
| Frank Butterfield | <i>Director of Springfield Field Office</i> |
| Lisa DiChiera | <i>Director of Advocacy</i> |
| Leanne Gehrig | <i>Admin and Special Projects Coordinator</i> |
| Suzanne Germann | <i>Director of Grants and Easements</i> |
| Marija D. Rich | <i>Director of Membership and Communication</i> |
| Tiffanie Williams | <i>Events Manager</i> |

FROM THE PRESIDENT TO OUR MEMBERS

Have you noticed something different about your newsletter? From a new name to a more user-friendly design, turn the pages of this first issue of *The Arch* to reveal an in-depth view of the work that you make possible as a member.

What better symbol for the foundational and visionary work that we all do to enhance communities through historic preservation?

We at Landmarks Illinois hope that you're delighted by the redesign of your member newsletter as part of the ongoing refresh of our logo and image. More engaging images are just one aspect of the new design. You'll find in-depth articles on preservation topics, short takes on our programs, interesting and intriguing statistics and interviews with leaders in our field – all packaged in a fresh and accessible format.

In searching for a title for the new design, *The Arch* seemed the perfect fit. Louis Sullivan's masterwork Chicago Stock Exchange arch, which we were formed to save in 1971, has been our symbol and touch point for more than four decades. You'll still find the Sullivan arch in the top right corner of our new logo. In addition to its literal meaning for Landmarks, the arch is one of the most historic forms of design and a beautifully simple piece of engineering that holds incredible weight. An arch is also the frame to view the image beyond. What better symbol for the foundational and visionary work that we all do to enhance communities through historic preservation?

Our newsletter keeps you informed quarterly of the impact of your membership investment in Landmarks Illinois. We continue to see more people engage in our work and that enables us to expand our reach across Illinois to help people save places. Thank you for providing Landmarks Illinois with a strong foundation of support from which we can build our programs.

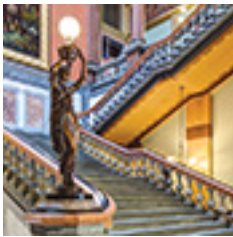
I welcome your comments and feedback at McDonaldB@lpci.org and all of us at Landmarks Illinois wish you a joyful holiday season.

Bonnie McDonald

Bonnie McDonald
President

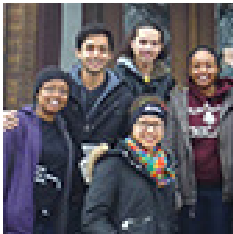


2



AWARDS PEOPLE SAVING PLACES

4



STATEWIDE NEWS THE STATE OF PRESERVATION

7



PEOPLE MEET TERRY TATUM

8



EVENTS PRESERVATION SNAPSHOTS

9



CONTRIBUTIONS THANK YOU

Cover photo: 2014 Project of the Year, Richard H. Driehaus Preservation Foundation Awards, State Capitol, Springfield (credit: Tom Rossiter)

Back cover photos: (left to right) Spoon River Bridge, Bernadotte (credit: Bonnie McDonald); East School, Pittsfield (credit: Frank Butterfield); Chicago Theater, Chicago (credit: Hedrich Blessing)

AWARDS

PEOPLE SAVING PLACES

2014 RICHARD H. DRIEHAUS PRESERVATION AWARDS

Nine outstanding preservation efforts from across the state were honored at a special ceremony on November 1 at the InterContinental Hotel, Chicago, by Landmarks Illinois. This year's award winners range from a main street bank in Warren to the State Capitol. For the complete list of honorees, go to our website at www.Landmarks.org.



WALKER AND CAROLYN JOHNSON

Joseph Antunovich Award for Leadership
Walker and Carolyn Johnson have been stalwart advocates of historic preservation and leaders in the field for decades. Walker, an award-winning architect, is one of the most enduring figures in Chicago's preservation community. He has contributed to or led feasibility studies for some of the area's most prominent sites, including the Marquette Building, Glessner House, the Chicago Cultural Center, Howard van Doren Shaw's Ragdale, the Foellinger Auditorium at the University of Illinois at Urbana-Champaign, and the Wacker Drive reconstruction. In 1992, he founded Johnson-Lasky Architects, a pioneering restoration architecture firm.

Walker's commitment to preservation is extracurricular, as well; he served on the first board of directors of Landmarks Illinois (then the Landmarks Preservation Council) in 1971, and has similarly dedicated himself to countless other preservation advocacy organizations over his 40-year career.

Carolyn Johnson joined the staff of the Landmarks Preservation Council in 1976, and during her ten years with the organization, she worked as a speaker, educator, and advocate for preservation in statewide and national venues. She organized what is considered the country's first Preservation Caucus, as well as the first Illinois Statewide Preservation Conference. Following her departure from Landmarks, Carolyn took on various executive roles in local preservation and arts advocacy organizations, including the Chicago Maritime Society and the Illinois State Historical Society. The Johnsons are preservation pioneers, and their combined work has profoundly developed the field of historic preservation in Illinois and beyond.

(top) Walker & Carolyn Johnson; (bottom left) Ragdale, Lake Forest; (bottom right) Foellinger Auditorium, University of Illinois at Urban-Champaign (credits: Courtesy of Walker Johnson)



PROJECT OF THE YEAR

ILLINOIS STATE CAPITOL WEST WING Springfield

The restoration of the West Wing of the Illinois State Capitol represents the second phase of a comprehensive renovation program for the state's most significant governmental building. A National Historic Landmark designed by Alfred Piquenard between 1868 and 1888, the Capitol is one of the best examples of the Second Empire style in the Midwest. Unfortunately, within fifty years of its construction, the Capitol's sublime interiors had been compromised by fires, incompatible modifications, and insensitive attempts to increase the building's capacity through the insertion of mezzanine floors.

The plan for the West Wing included the restoration of the key historic public spaces throughout its four floors and basement to the Capitol's period of significance (1868-1908). Simultaneous with the restoration was the complete upgrade of the building's systems including energy efficient HVAC systems, life safety and accessibility upgrades and security improvements.

Restored public spaces include the first, second, third, and fourth level circulation spaces, corridors and the Grand Stair. Non-original and later interventions and remodeling work were removed and the configuration of the original architecture revealed. Of particular note is the systematic restoration of the Grand Stair which extends from the first through the third floors, with original marble features cleaned and replicated with ten types of marbles from quarries the world over. The mezzanine additions in this space were removed to restore Piquenard's original, soaring stair hall configuration with rich, colorful, stenciled wall coverings. Period appropriate hearing rooms and monumental offices for public officials were created. Throughout the West Wing, original millwork, doors, plaster, cornices, decorative treatments, and light fixtures were either restored or carefully replicated; at the same time, the 19th-century building was able to accommodate 21st-century life safety systems.

(right and bottom) Grand Stair, Illinois State Capitol, Springfield (credit: Tom Rossiter)

THE REMAINING AWARD WINNERS CAN BE FOUND ON LANDMARKS.ORG.



Of particular note is the systematic restoration of the Grand Stair which extends from the first through the third floors, with original marble features cleaned and replicated with ten types of marbles from quarries the world over.

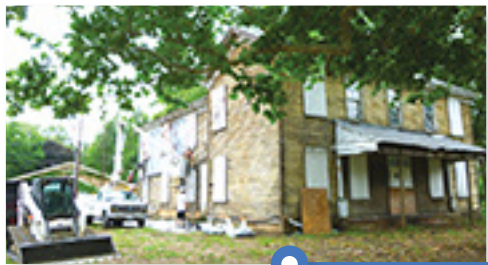
THE STATE OF PRESERVATION

SOUTH SIDE COMMUNITY CENTER
Chicago



Landmarks Illinois awarded a \$2500 Preservation Heritage Fund Grant to the South Side Community Art Center in Chicago for a condition and needs assessment of the building. The Art Center opened in 1940 as part of the WPA Federal Art Project, the first African American art center of its kind in the United States. The building is currently in need of repairs, including the roof, repointing, windows and the basement. The condition of the building is jeopardizing both the quality of work that the Center is able to provide and the protection of its historic art collection and archives. The Center intends to create a focus group of experts in the fields of architecture and construction who will produce a comprehensive study report and analysis of the current condition and needs of the building

(credit: Landmarks Illinois)



JUDGE TAYLOR HOUSE
Springfield

In late 2013, site preparations began for the demolition of the Judge Taylor House, Springfield. The Lincoln-era home, which later served as a school for African-American children, has been vacant for over a decade and was included on Landmarks Illinois' endangered list in 2004. Faced with this imminent threat, Landmarks Illinois worked with a newly-formed coalition that included architects, landscape architects, contractors, and a local non-profit in order to delay the demolition order and develop a new vision for the property and a timeline for repairs. The coalition succeeded in creating an exterior rehabilitation plan, transferring ownership to the non-profit Springfield Project, and having the demolition order lifted by the City of Springfield. Recently, the asbestos siding was removed to reveal the historic wood clapboards, which will be retained and rehabilitated.

(credit: Sue Massie)



2015 CONFERENCE
ON ILLINOIS MAIN
STREET & HISTORIC
PRESERVATION
Carbondale

Join Illinois Main Street, the Illinois Historic Preservation Agency, Landmarks Illinois, and the Illinois Association of Historic Preservation Commissions for the 2015 Conference on Illinois Main Street and Historic Preservation in Carbondale on June 23 through 25, 2015. This conference combines the annual Illinois Main Street conference with the biennial statewide historic preservation conference and will feature a variety of preservation and commercial-district-revitalization sessions, technical workshops, tours, networking receptions, and an awards banquet.

1960s view, Fuller Home Dome, Carbondale
(credit: Courtesy of RBF Dome NFP)

IN THE FIELD

suburban



2012 STATEWIDE
ENDANGERED LIST

MAYWOOD SOLDIERS' WIDOWS HOME 224 N. 1st Ave., Maywood
A reuse and site development study was completed by Landmarks Illinois for the Maywood Soldiers' Widows Home, which was included on the 2012 statewide endangered list. Vacant since 2003, LI's consulting team – the firms of Vinci Hamp Architects and Sullivan Goulette & Wilson – concluded that due to the building's layout and location an office or medical office conversion would offer an excellent reuse opportunity. The study also encourages the Village to market the historic building with the adjacent land at 1st Ave. and Lake Streets as one redevelopment site that would include new retail construction with renovation of the historic building. The study can be seen on Landmarks Illinois' website: www.Landmarks.org.

(credit: David Shalio)

chicago



TRUMBULL SCHOOL 5200 N. Ashland Ave. Chicago
Landmarks Illinois, in partnership with the Edgewater Historical Society, the Andersonville Chamber of Commerce, Preservation Chicago and neighborhood groups, have advocated that the closed Lyman Trumbull School (1909, Dwight Perkins, architect), an important Prairie-style building included in the Andersonville Commercial Historic District, be fully reused as part of any redevelopment plan for the site. Chicago Public Schools (CPS) is anticipated to release a Request for Proposals (RFP) for purchase and redevelopment of the historic building this fall. The partnering organizations have demonstrated that there is great interest in renovating and reusing the building by many developers experienced in using historic tax credits and that reuse should be the only option in CPS' RFP. For more information on the community input process, visit the website of Alderman Patrick O'Connor at www.AldermanOConnor.com

(credit: Jim Peters)

statewide



2014 STATEWIDE
ENDANGERED LIST

TEN MOST ENDANGERED HISTORIC PLACES Statewide
After months of input from Landmarks Illinois committee and board members and stakeholders, the "Ten Most Endangered Historic Places" program, which celebrates its 20th year in 2015, will be revised to make it more flexible and effective. The program will be renamed the "**Most Endangered Historic Places in Illinois**," dropping the number "Ten" so that staff and board members can determine which properties strategically should be included on the annual list, without being bound by a restrictive number. This will also enable the organization to add a threatened building or site, if needed, to the list any time during the year after its initial announcement in April. LI will still accept public nominations, with a deadline for the 2015 list of January 12. The 2015 nomination form can be found on the Landmarks Illinois website at www.Landmarks.org.

(credit: Frank Butterfield)



PROJECT PROFILE

Roadmap to Growth

Landmarks Illinois (LI) is excited to announce the incredible support of the Richard H. Driehaus Foundation to enhance our fundraising capacity. In September of 2014, LI received a grant from the foundation to fund our engagement of a consultant to prepare a comprehensive Plan for Development Capacity. The Plan will serve as a roadmap for our organization to grow the number of donors who care about preservation and are willing to support our work. The initiative goes beyond identifying prospective funders; the

consultant will also evaluate if we have the internal capacity to maximize our potential and will make recommendations in that area, as well. Landmarks Illinois expresses our appreciation to the Richard H. Driehaus Foundation for its support of this important project, which has the goal of growing Landmarks Illinois and our partner organizations in the process. We anticipate the Plan for Development Capacity will be completed by June, 2015.

Members of Louis Sullivan Society, Landmarks Illinois' highest donor level (credit: Landmarks Illinois)



EASEMENT

Property For Sale: River Forest Women's Club

This 1913 board-and-batten clubhouse, designed by the Prairie School Architect William Drummond, went from Landmarks Illinois' Ten Most Endangered Historic Places list to winning one of our Richard H. Driehaus Foundation Preservation Awards for Project of the Year in 2008. Centered on a double residential lot and vulnerable to teardown redevelopment, an interested buyer came forward with an offer to restore the building and convert it to a single family residence. The main floor auditorium was retained and the lower level was converted into living space.

Original wood windows and portions of the siding, which were in extremely poor condition, were repaired or reconstructed to match. Interior finishes were restored and the exterior siding was returned to its historic brown color. In addition to their careful restoration work, the owners donated a preservation easement on the property to protect the site in perpetuity. Interested buyers should contact: Marion Digre, RE/MAX In The Village, Realtors, at 708-386-1400.

(credit: Marion Digre of RE/MAX In The Village)

DID YOU KNOW?



PRESERVATION AWARDS LANDMARKS ILLINOIS HAS PRESENTED

The number includes our Richard H. Driehaus Foundation Preservation Awards (2014-1994) and previous awards program (1993-1991.)



AWARD WINNERS PREVIOUSLY ON THE "MOST ENDANGERED" OR "WATCH LIST"

The Arcade Building in Riverside is a 2014 winner for restoration but was in dire straits when listed to LI's 2009 Most Endangered list.



WINNING PROJECTS IN TOWNS WITH A POPULATION UNDER 5000

Elizabethtown, population 301, was the site of The Grand Rose Hotel a 2000 winning project.

PEOPLE

MEET TERRY TATUM



Architectural historian Terry Tatum retired in August as Director of Research at the Chicago Department of Planning and Development's Historic Preservation Division. In his twenty years with the City, Tatum prepared 53 landmark designation reports, resulting in approximately 1000 buildings now protected, individually or within districts, under the Chicago Landmarks Ordinance.

What was the most challenging research you undertook in preparing a landmark designation report?

The Jewelers' Row District was especially challenging because in addition to documenting the architecture, there was an additional layer of social, cultural and economic history to research. The report included the types of businesses – jewelers, purveyors of luxury goods like silver, small proprietors and medical professionals – who occupied the buildings over 100 years. It required scanning decades of central area business directories.

What do you think is the most underappreciated building type in Chicago?

While Chicago prides itself on its skyscrapers, churches, schools and bungalows, the basic two-flat defines this city and helped build its middle-class. A family which couldn't afford a single-family house could purchase a two-flat and rent one apartment for income or share in the purchase with another family member. The economics and social function of it allowed for countless families to build equity and achieve the American dream. Its scale fits perfectly within the streetscape of single-family homes and two-flats are integrated into nearly every neighborhood in the city.

(credit: John Cramer)



What historic building still makes you gasp with delight every time you pass it?

The Krause Music Store is so unexpected, surrounded by standard storefronts within a simple neighborhood commercial street that you can't pass it and not stop and look. Sullivan's elaborate terra cotta ornament never ceases to amaze. (The Krause Music Store, built in 1922 and designed by Louis Sullivan and William Presto, is located at 4611 N. Lincoln Ave. It was designated a Chicago Landmark in 1977).

(credit: Hedrich Blessing)





clockwise from top left:
Krista* and Joe Gnatt in front of the Chicago Board of Trade Building's vault door. *LI Board Member
(left to right) Lynda Dossey, Suzanna Craib-Cox, and Mary Brush in the vault
(left to right) Patrick Boettcher, Tristen Heimann, Gregory Dowell on the lobby's mezzanine
(All photos credit: Bob Elmore)



Skyline Social

Over 200 guests and event sponsors enjoyed a delightful evening while supporting the preservation programs of Landmarks Illinois at the Skyline Social on Saturday, October 20, held in the stunning Art Deco lobby of the Chicago Board of Trade Building. The event was hosted by LI's Skyline Council, a committee of young professionals who enhance the work of Landmarks Illinois with independent programming and promotional initiatives throughout the year. We gratefully thank the Skyline Council, event sponsors and guests for their generous support of historic preservation in Illinois.

To view photos of the Skyline Social and other recent events, including Landmarks Illinois' Real Estate & Building Industries Council 2014 Cocktail Reception Honoring the Gibbons & Steger Buildings – "Infinite" Apartments, go to Landmarks Illinois on Flickr.

We gratefully thank the Skyline Council, event sponsors and guests for their generous support of historic preservation in Illinois.

Preservation Snapshots



HISTORIC CHICAGO THEATERS THURSDAY, NOVEMBER 20 12: 15 P.M. TO 1:00 P.M.
The Auditorium Building, Roosevelt University's Murray-Green Library, 430 S. Michigan Avenue, 10th floor

Chris Jones, longtime chief Chicago Tribune theater critic, will talk about the history of the Auditorium Theatre as a performance venue in the context of Chicago's great collection of historic theaters.

Chris Jones (credit: Chicago Tribune)

125
AUDITORIUM THEATRE 1889-2014

For the 2014 season of lectures, Landmarks Illinois has partnered with the Auditorium Theater in honoring the theatre's 125th anniversary. The year-long partnership has featured lectures celebrating the Auditorium Building. Join us for the last lecture of this exciting series.

Save the Date

LEGENDARY LANDMARKS CELEBRATION: 10TH ANNIVERSARY
Honoring Bulley & Andrews, Tim Samuelson and Rocky Wirtz
MARCH 19, 2015

CONTRIBUTIONS

THANKS TO OUR SUPPORTERS

JULY 1 – OCTOBER 4, 2014
Through membership dues, contributions, event sponsorship, and grants, Landmarks Illinois is able to preserve protect, and promote Illinois' historic buildings and sites. The Board of Directors, volunteers, and staff sincerely thank all our supporters for their contributions. However, space allows us to only list the following:

\$100-\$499		
John Adler Laura Albertinetti Daniel Baigelman, Full Circle Architects Nicholas Bassing, Project Management Advisors Roger Barak Patrick Boettcher Paul Boland, Henneman Engineering, Inc. Ettore Christopher Botti, Botti Studio Arch Arts Ryan Bouck Bonnie Brennan Bob Brobson Fran Casey, DePaul University Susanna Craib-Cox John Cramer & Nate Lielasus Christopher Cronin, Knickerbocker Roofing and Paving Co, Inc William Denis, Decorators Supply Corp. Dan Dillabaugh, Dillabaugh, Inc. Justin Elliot Christopher J. Enck Erika Fabisch Leslie Fitzpatrick Annie Frigo Ed & Kim Gerns Douglas Gilbert & Melissa Bogusch Keith Goad, Prudential Rubloff Graham Grady Michelle Ha	Joseph Hanko Ed & Betty Harris Jeffreen Hayes, Rebuild Foundation Jane & Don Hunt Ken Itle, Wiss, Janney, Elstner Associates, Inc. Thomas M. Jeffris, II Sona Kalousdian & Ira Lawrence Michael Kaufman, AIA, Goettsch Partners Meg Kindelin Catie Knoebel, MTH Industries, Inc. Mark Kuberski Megan Langer Anthony Latino Ellison Laughton Tom Lawler Mati Maldre Gary Marks, Marks Advisors, LLC Timothy McCarthy Bonnie McDonald & Michael Johnson Kirsten Freiburger Mellem Michael Mencarini Eric Mersmann, Perkins & Will Kevin Miske, Building Blocks, Inc. Floyd Mittleman Mike Mocerì, Lohan Anderson Kate Monachos Lindsay Mican Morgan	Jamie Morris, Wiss, Janney, Elstner Associates, Inc. Mark & Debbi Nussbaum, Architectural Consulting Engineers Matt & Erika Nygaard Penny & Bill Obenshain Heather Plaza-Manning Suzi Reinhold Michiko Romm Elaine G. Rosen Thomas J. Rossiter, Tom Rossiter Photography Mark W. Schwiebert, Schwiebert Law, P.C. John & Barbara Seaman Martin V. Sinclair, Jr., Skadden Gary Steffy, Gary Steffy Lighting Design Inc. Norman Strasma Sonia Surlej, Professional Service Industries, Inc. Karen & Robert Tate Lisa Temkin Andrea C. Terry & Edward I. Torrez Rhonda Thomas Katie Troccoli, Washington Square Josh Turcotte Barnaby Wauters Daniel Whittaker Sandra & David Williams Ernest Wong, Site Design Group, Ltd. Theodore W. Wrobleski
\$500-\$999		
AltusWorks, Inc. Peter M. Babian, Simpson Gumpertz & Heger Inc. Thomas Cleary, Jones & Cleary Roofing/Sheet Metal Co. Randy Johnson, Brand Scaffold	Matt Ludington, UBS Financial Services Inc. Judi Male Natalie Menke, RATIO Architects Phil Renouf, Klein and Hoffman, Inc. Thomas S. Rivkin, Central Building & Preservation L.P.	Robin Schabes, IFF Jenna Snedden, Mark 1 Restoration Co. Robert Wislow, U.S. Equities, Inc. Amy Woods, Thornton Tomasetti Carol S. Wyant & Craig McGrath
\$1000-\$4999		
Andrew Ahitow Joseph M. Antunovich, Antunovich Associates Inc. Alicia & Brian Berg Susan Baldwin Burian, Baldwin Historic Properties Nicholas Carson Inga Carus, Carus Corporation Dale T. Chapman, Ed.D Dan Dowd, MB Financial Bank Lisa Fiorenza, Plante Moran Jean A. Follett & Douglas M. Thompson Ed & Kim Gerns GlenStar Asset Management, LLC	Krista Gnatt, Bulley & Andrews Shelley Gorson & Alan Salpeter Jeffrey P. Goulette, Sullivan, Goulette & Wilson Architects Philip Hamp, Vinci-Hamp Architects, Inc. Thomas Hannula, Walker Restoration Consultants Mark Henning, Winston & Strawn, LLP John Marcheschi, WMA Consulting Engineers Sean McGowan David Moes, Navigant Consulting Jorge A. Moreno, CivCon Services, Inc. Paul B. O'Kelly	Dennis Pietrowski, Ewing-Doherty Mechanical, Inc. Karen A. Prieur & C. James Prieur Michael Rachlis, Rachlis Durham Duff Adler & Peel LLC Sandra Rand Colleen Reitan Janet Rotner & Philip Rotner William W. Tippens, Related Midwest Jack & Susan Tribbia John J. Tully, Jr., Thomas M. Tully & Associates Anne B. Voshel, AVA Consultants
\$5000-\$9999		
Brad Mathes, Linn-Mathes Construction Company	David Haymes, AIA, Pappageorge Haymes Partners	Neal A. Stein, North Capital Group, LLC
IN-KIND GIFTS		
Antunovich Associates AVA Consultants Berglund Construction Bulley & Andrews	Plante Moran Related Midwest Sullivan Goulette & Wilson Ugly Dog Design	Vinci-Hamp Architects, Inc. Wiss, Janney, Elstners Associates, Inc.
\$10000 AND ABOVE		
Mr. Daniel T. McCaffery, McCaffery Interests	The Richard H. Driehaus Charitable Lead Trust	
BEQUEST		
John T. Geary		
FOUNDATIONS		
IN HONOR OF		
Anne B. Voshel		
IN MEMORY OF		
Juergen Krenzien		
MATCHING GIFTS		
Kirkland & Ellis Foundation Matching Contributions Program		

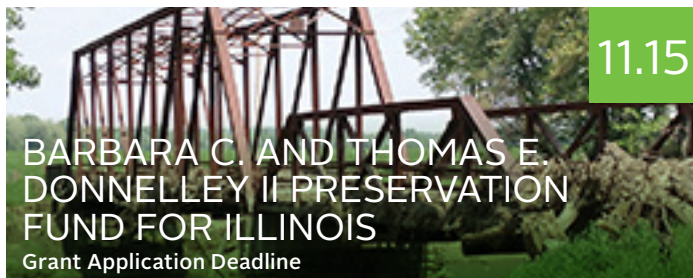


LANDMARKS
ILLINOIS

30 N. Michigan Avenue
Suite 2020
Chicago, IL 60602-3402

Nonprofit
Organization
US Postage
PAID
Permit no. 6705
Chicago, IL

GET INVOLVED!



11.15

BARBARA C. AND THOMAS E.
DONNELLEY II PRESERVATION
FUND FOR ILLINOIS

Grant Application Deadline



11.15

PRESERVATION
HERITAGE FUND
GRANTS

Grant Application Deadline



11.20

HISTORIC
CHICAGO
THEATERS

Preservation Snapshots lecture

1.12

MOST
ENDANGERED
HISTORIC PLACES
IN ILLINOIS

Nomination Deadline

6.23-25

2015 CONFERENCE ON ILLINOIS
MAIN STREET AND HISTORIC
PRESERVATION

Carbondale

TO LEARN MORE
www.Landmarks.org



(312) 922-1742

Thanks to a grant from Landmarks Illinois' Richard H. Driehaus Courthouse Initiative, the Henry County Courthouse in Cambridge has restored its clock, clock tower and exterior lighting which highlights the building's architectural features at night. For more Courthouse projects, go to www.Landmarks.org.

(credit: Phillips & Associates)

